

# CZECH AEROSPACE *Proceedings*

## LETECKÝ *zpravodaj*

### In this issue:

**Propeller Control Loop  
Model Development  
and Simulation of  
Transient Behavior**

**Sensor Analysis for  
TEASER Project**

**Calculation of  
Temperature Fields of  
Vibrating Composite  
Parts**

**Wind Tunnel  
Research of Wingtip  
Devices**

**Cooling of Electronics  
Installed in Passenger  
Seats of Civil  
Aeroplanes and its  
Testing**

**Simulation of Rigid  
Projectile Impact on  
the Real Aircraft  
Structure**

**Unmanned Aircraft  
Structural Model and  
its FEM Analysis**



### PW-141 UAV Project



# CZECH AEROSPACE *Proceedings*

JOURNAL FOR CZECH AEROSPACE RESEARCH

## LETECKÝ *zpravodaj*

### Editorial address:



Aeronautical Research and Test Institute / VZLÚ, Plc.  
Beranových 130, 199 05 Prague 9, Letňany  
Czech Republic  
Phone.: +420-225 115 223, Fax: +420-869 20 518

### Editor-in-Chief: Editor & Litho:

Ladislav Vymětal (e-mail: [vymetal@vzlu.cz](mailto:vymetal@vzlu.cz))  
Stanislav Dudek (e-mail: [dudek@vzlu.cz](mailto:dudek@vzlu.cz))

### Editorial Board:

#### Chairman:

Milan Holl, President ALV

#### Vice-Chairman

Vlastimil Havelka, ALV

#### Members:

Jan Bartoň, Tomáš Bělohradský, Vladimír Daněk,  
Luboš Janko, Petr Kudrna, Pavel Kučera, Oldřich Matoušek,  
Zdeněk Pátek, Antonín Píštěk

### Publisher:



Czech Aerospace Manufacturers Association / ALV, Prague  
Beranových 130, 199 05 Prague 9, Letňany  
Czech Republic  
ID. No. 65991303

### Printing:

Studio Winter Ltd. Prague

Periodicity: Three times per year. Press Reg. No. MK ČR E 181312.

Subscription and ordering information available at the editorial address. Legal liability for published manuscripts' originality holds the author. Manuscripts contributed are not returned automatically to authors unless otherwise agreed. Notes and rules for the authors are published at our Internet pages <http://www.vzlu.cz/>.

**Czech AEROSPACE Proceedings**  
**Letecký zpravodaj**  
**2/2009**

© 2009 ALV /Association of Aviation Manufacturers. All rights reserved. No part of this publication may be translated, reproduced, stored in a retrieval system or transmitted in any form or by any other means, electronic, mechanical, photocopying, recording or otherwise without prior permission of the publisher.

ISSN 1211 - 877X



**EUROPEAN UNION**  
**EUROPEAN REGIONAL DEVELOPMENT FUND**  
**INVESTMENT IN YOUR FUTURE**

# Preliminary Sizing of Large Propeller Driven Aeroplanes



## Předběžný výpočet rozměrů velkého vrtulového letounu

Prof. Dieter Scholz, Mihaela Niță / Hamburg University of Applied Sciences, Hamburg, Germany

Different types of aeroplanes (small / large, propeller / jet) require their own type of preliminary sizing method. One of these methods differs only in a few but important aspects from the other. For the sake of efficient teaching of students and easy application in practice, the authors ask for the definition of a set of clearly defined step by step preliminary sizing methods. Based on the rather well known sizing method for large jet aeroplanes, the paper derives a preliminary sizing method for large propeller driven aeroplanes. In this way the paper tries to contribute to the definition of the set of methods. The sizing methods are all based on a matching chart that helps to graphically solve a two-dimensional optimization problem. The matching chart draws the optimization variable thrust-to-weight ratio (for jets) respectively power to mass ratio (propeller driven planes) versus wing loading for all basic requirements, which the aeroplane has to fulfill. The sizing method for propeller driven large aeroplanes is explained in detail and applied to a redesign study of the ATR 72. All equations are given in a form readily available for use. This requires in some cases the evaluation of proportionality factors based on aircraft statistics. Given are factors taking into account statistics for landing distance, take-off distance and maximum glide ratio for large propeller driven passenger aircraft. Furthermore, generic equations for the variation of power with altitude and speed of turboprop engines is given as well as a chart to determine the propeller efficiency.

**Keywords:** aircraft, design, preliminary sizing, matching chart, propeller, ATR 72, redesign.

## 1 Introduction

### 1.1 Preliminary Sizing

In literature and in practice, *aircraft development* has been repeatedly broken down into different phases. Various approaches have been followed. **Figure 1** shows one approach of dividing aircraft development into phases and shows key milestones. The development of large civil aircraft has inspired this example. Typical *aircraft design* activities take part primarily in the feasibility, concept and definition phase. *Preliminary sizing* is the first step in aircraft design and as such part of the feasibility phase, which is followed by *conceptual design* in the concept phase.

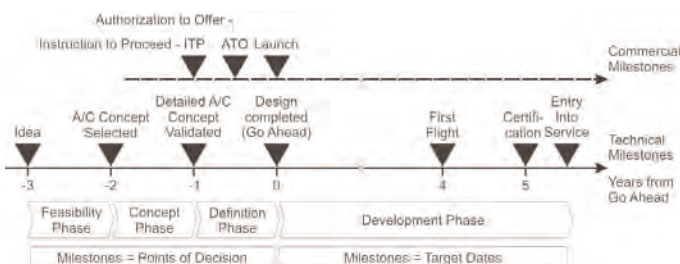


Fig. 1 — Phases of aircraft development

Preliminary sizing of an aircraft is possible without knowledge of the aircraft's geometry. In preliminary sizing the aircraft is more or less reduced to a point mass. However concrete ideas about the aircraft need to exist:

- What type of configuration will be selected?
- What aspect ratio can be expected?
- What cruise Mach number and type of propulsion system will be selected?

With these first considerations, realistic requirements can be formulated. These *requirements* (some of them depending on the certification rules — see below) will enter the preliminary sizing phase:

- Payload  $m_{PL}$ ,
- Range  $R$ ,
- Mach number in cruise  $M_{CR}$  or speed  $V_{CR}$ ,
- Take-off field length  $s_{TOFL}$ ,
- Landing field length  $s_{LFL}$ , approach speed  $V_{APP}$  or stall speed  $V_S$ ,
- Climb gradient  $\gamma$  during second segment,
- Climb gradient  $\gamma$  during missed approach.

Preliminary sizing yields basic *aircraft parameters* like

- Take-off mass  $m_{MTO}$ ,
- Fuel mass  $m_F$ ,
- Operating empty mass  $m_{OE}$ ,
- Wing area  $S_W$ ,
- Take-off thrust  $T_{TO}$  or take-off power  $P_{TO}$ .

### 1.2 Aeroplane Categories, Propulsion System and Certification Rules

When attempting to do the preliminary sizing of a passenger aircraft, it has to be differentiated

- a) the type of *propulsion system* (propeller or jet),
- b) the *certification rules* for the aircraft.

The certification rules depend as much on the category and size of the aircraft as on the propulsion system. Let's differentiate these categories of aeroplanes:

- 1 Large jet aeroplanes are certified to CS-25 [CS-25] respectively FAR Part 25 [FAR Part 25],
- 2 Very light jets are certified to CS-23 [CS-23] respectively FAR Part 23 [FAR Part 23],
- 3 Large propeller driven aeroplanes are also certified to CS-25 respectively FAR Part 25
- 4 Smaller propeller driven aeroplanes (normal, utility, aerobatic and commuter aeroplanes) are certified to CS-23 respectively FAR Part 23,
- 5 Very light propeller driven aeroplanes (up to a maximum take-off mass of 750 kg) can be certified to CS-VLA [CS-VLA],

6 Different certification rules exist for ultra light aircraft.

1.3 Preliminary Sizing Methods

Different preliminary sizing methods are needed for the various categories of aeroplanes given in (1) through (6) above, because equally (a) and (b) have an impact on the underlying flight mechanics of the sizing problem.

Aircraft design text books or lecture notes do not always seem to present a clear step by step method for preliminary sizing. One early text book with a clear step by step method for preliminary sizing was Corning [Corning 1964]. Loftin [Loftin 1980] proposes a preliminary sizing method for large jet aeroplanes (1). Roskam [Roskam 1989], Scholz [Scholz 2008] and others base their preliminary jet sizing method on Loftin. Loftin [Loftin 1980] proposes also another method for smaller propeller driven aeroplanes (4).

What seems to be missing in the literature is a set of clearly defined step by step preliminary sizing methods for each category of aeroplane. This set of methods has to be built in such a way that the user easily understands the similarities and differences of the various methods.

Aim of this paper is to present a sizing method for large propeller driven aeroplanes (3) that follows as closely as possible the better known method for large jet aeroplanes (1) and work in this way towards the goal of a unified and complete set of sizing methods for the most important categories of civil aeroplanes.

1.4 General Approach

A matching chart should be at the heart of each sizing method. The matching chart helps to graphically solve a two-dimensional optimization problem. Keeping in mind that flight mechanic calculations for propellers are based on power P, whereas calculations for jets are based on thrust T, the two optimization variables as proposed here are:

- a) thrust-to-weight ratio  $T_{TO} / (m_{MTO} \cdot g)$  respectively power to mass ratio  $P_{TO} / S_w$
- and
- b) wing loading  $m_{MTO} / S_w$ .

Figure 2 shows a generic matching chart for large jet aeroplanes. From the various requirements, either the wing loading or the thrust-to-weight ratio (or a function of one versus the other) can be calculated. For all calculations it is ensured that wing loading and thrust-to-weight ratio always refer to take-off conditions, which makes it possible to compare the values of dif-

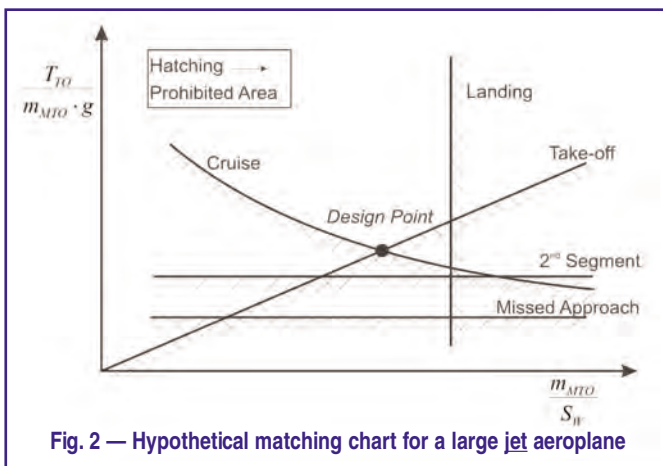


Fig. 2 — Hypothetical matching chart for a large jet aeroplane

ferent flight phases. The results are plotted on the matching chart. The matching chart for large propeller driven airplanes only differs by putting  $P_{TO} / m_{TO}$  on the ordinate and will be explained in the main part of this paper.

The aim of optimization is to achieve the following:

- Priority 1: to achieve the smallest possible thrust-to-weight ratio (respectively power to mass ratio)
- Priority 2: to achieve the highest possible wing loading (if not other design requirements indicate to decide otherwise).

2 Overview

An overview of the proposed preliminary sizing method for large propeller driven aeroplanes is given in Figure 3. The blocks in the first column convert the requirements into the optimization parameters, which are power to mass ratio  $P_{TO} / m_{TO}$  and wing loading  $m_{TO} / S_w$  (shown in Figure 3 in the second column). In detail, we have:

**Block 1** "LANDING FIELD LENGTH" provides a maximum value for the wing loading  $m/S$  (reference value:  $m_{TO} / S_w$ ). The input values of the calculation are the maximum lift coefficient with flaps in the landing position  $C_{L,max,L}$  as well as the landing field length  $S_{LFL}$  according to CS/FAR. The maximum lift coefficient  $C_{L,max,L}$  depends on the type of high lift system and is selected from data in the literature (see textbooks and lecture notes).

**Block 2** "TAKE-OFF FIELD LENGTH" provides a minimum value for the power-to-mass ratio as a function of the wing loading:  $P / m = f(m / S)$  with reference value:  $P_{TO} / m_{MTO}$ . The functional connection  $P / m = f(m / S)$  is dependent on the maximum lift coefficient with flaps in the take-off position  $C_{L,max,TO}$ , propeller efficiency  $\eta_p$  and the take-off field length  $s_{TOFL}$ . The maximum lift coefficient  $C_{L,max,TO}$  is selected with the aid of data in the literature. In a first attempt it is often assumed that  $C_{L,max,TO}$  is 80% of  $C_{L,max,L}$ .

**Block 3** examines the "SECOND SEGMENT CLIMB GRADIENT" and **Block 4** the "MISSED APPROACH CLIMB GRADIENT". The blocks provide minimum values for the power-to-mass ratio  $P / m$ . The input value for the calculations: the lift-to-drag ratio  $L / D$  and the propeller efficiency  $\eta_p$ .  $L / D$  is estimated on the basis of a simple approximation calculation.

**Block 5** "CRUISE MATCHING ANALYSIS" represents the cruise analysis that provides a minimum value for the power-to-mass ratio as a function of the wing loading:  $P / m = f(m / S)$ . The power-to-mass ratio thus determined is sufficient to facilitate a stationary straight flight with the assumed cruise Mach number  $M_{CR}$  or cruise speed  $V_{CR}$  for the respective wing loading. The calculation is carried out for the design lift coefficient  $C_{L,DESIGN}$ . The cruise altitude is also obtained from the cruise analysis. Input values are the lift-to-drag ratio  $E = L / D$  during cruise, the assumed cruise Mach number  $M = M_{CR}$  or speed  $V = V_{CR}$ , engine and propeller characteristics and the characteristics of the atmosphere.

The output values of the blocks in the first column of Figure 3 provide a set of relationships between the power-to-mass ratio

and the wing loading. Taken together, these relationships give, in a "SIMULTANEOUS SOLUTION" (Blocks 6) a single pair of values: power-to-mass ratio and wing loading ( $P/m; m/S$ ) (Block 7) that meets all requirements and constraints in an economical manner.

Blocks 8 and 9 stand for "WEIGHT ANALYSIS". The relative operating empty mass  $m_{OE}/m_{MTO}$  or the relative useful load  $u$  are estimated.  $m_{MTO}$  is the maximum take-off mass. The relative useful load is defined as

$$u = \frac{m_F + m_{PL}}{m_{MTO}} = 1 - \frac{m_{OE}}{m_{MTO}}$$

Various methods exist in the literature for estimating  $m_{OE}/m_{MTO}$  or  $u$ . For propeller driven aeroplanes, the power-to-mass ratio (from Block 7) could be used as an input value for a mass estimate according to statistics.

In Block 11 "RANGE EQUATION" yields the relative fuel mass  $m_F/m_{MTO}$  (Block 10) which is calculated, using the "Breguet Range Equation" for propeller aircraft, based on the "RANGE REQUIREMENT" (Block 12). Other input values are the assumed cruise Mach number  $M/M_{CR}$  or cruise speed  $V/V_{CR}$ , the lift-to-drag ratio during cruising  $E=L/D$ , the specific fuel consumption  $c = SFC_{CR}$  and the propeller efficiency  $\eta_p$  during cruise.

In Block 14 maximum take-off mass  $m_{MTO}$  is calculated from relative useful load  $u$ , relative fuel mass  $m_F/m_{MTO}$  and the payload requirement  $m_{PL}$  (Block 13). With the maximum take-off mass  $m_{MTO}$  the necessary take-off power  $P = P_{TO}$  and the wing area  $S = S_W$  can then be calculated in Block 15 from power-to-mass ratio  $P/m$  and wing loading  $m/S$ .

### 3 Optimization Parameters from Requirements

Optimization parameters are power to mass ratio  $P_{TO}/m_{TO}$  and wing loading  $m_{TO}/S_W$ . The requirements

are specified for the various phases of flight.

#### 3.1 Approach Speed

The landing requirements can be stated in terms of approach speed  $V_{APP}$  or landing field length  $s_{LFL}$ . Assuming similar braking characteristics of the aircraft of one category, statements of either approach speed or landing field length are equivalent ones. Based on statistics one statement can be transformed in the other:

$$s_{LFL} = \left( \frac{V_{APP}}{k_{APP}} \right)^2$$

The proportionality factor was evaluated (see Figure 4) from data selected for this category of large passenger turboprop aircraft:

$$k_{APP} = 1.64 \sqrt{\frac{m}{s^2}}$$

It also would have been possible to calculate  $k_{APP}$  from  $k_L$  (see Subsection 3.2 for  $k_L$ )

$$k_{APP} = \sqrt{\frac{2g \cdot 1.3^2}{\rho_0}} k_L = 5.20 \sqrt{k_L}$$

to yield a better value for large passenger turboprop aircraft:

$$k_{APP} = 1.93 \sqrt{\frac{m}{s^2}}$$

The two approaches do not result in exactly the same value because the evaluation was based on different aircraft data. Experience shows that reported values for approach speed are often not given accurately and do not always refer to the  $V_{APP} = 1.3 V_S$  reference speed. For this reason, better results can be obtained when using landing distance data. In comparison, large passenger jets [7], [9]:

$$k_{APP} = 1.70 \sqrt{\frac{m}{s^2}}$$

Based on the latter two values for  $k_{APP}$ , turboprop aircraft achieve a shorter landing field length at the same approach speed (by a factor of 1.29). This is due to their better reverse thrust capabilities, which in turn also resulted in a lower safety factor in the determination of landing field length from landing distance for turboprop aircraft:  $1/0.7 = 1.429$  for turboprop aircraft versus  $1/0.6 = 1.667$  for jets [1]. The turboprop advantage comes out as  $1.667/1.429 = 1.167$  which is about the ratio that resulted from aircraft data.

#### 3.2 Landing Field Length

Landing field length yields the optimization parameter wing loading

$$m_{MTO}/S_W \leq \frac{k_L \cdot \sigma \cdot C_{L,max,L} \cdot s_{LFL}}{m_{ML}/m_{MTO}}$$

The proportionality factor was evaluated (see Figure 5) from data selected for this category of large passenger turboprop aircraft:

$$k_L = 0.137 \frac{kg}{m^3}$$

In comparison, large passenger jets [7], [9]:

$$k_L = 0.107 \frac{kg}{m^3}$$

have a lower value than the  $0.137 \text{ kg/m}^3$  from above, which means that turboprop aircraft on ave-

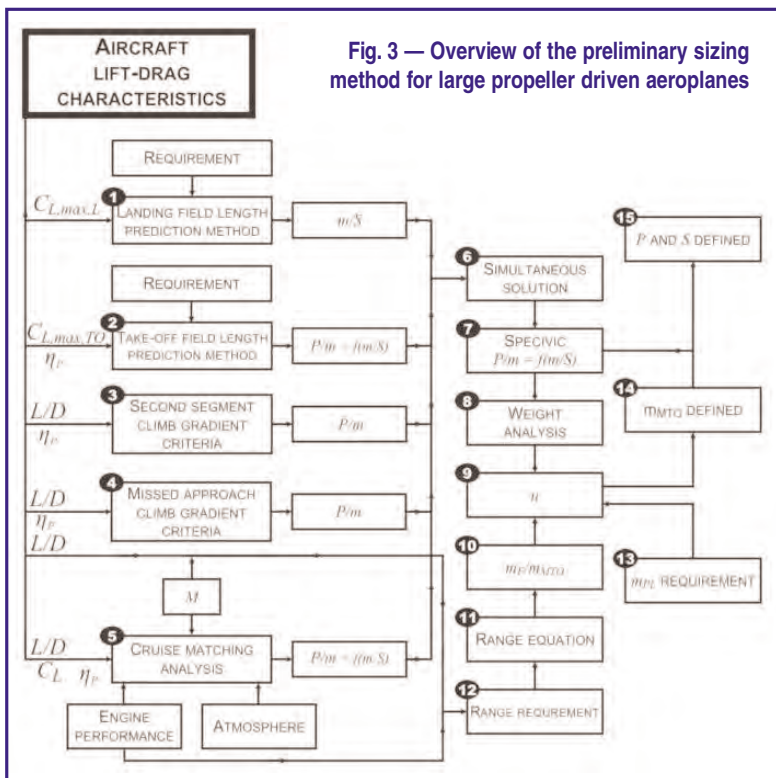


Fig. 3 — Overview of the preliminary sizing method for large propeller driven aeroplanes

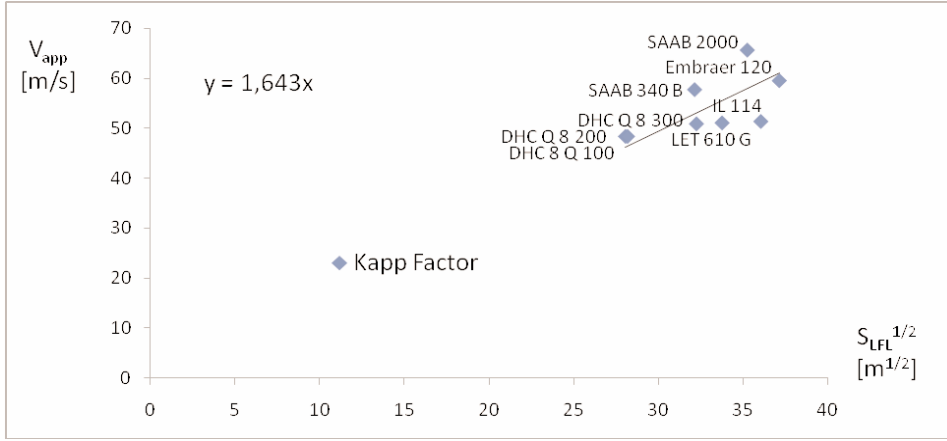


Fig. 4 — Statistical factor  $k_{APP}$  for approach speed calculation from landing field length for turboprop aircraft

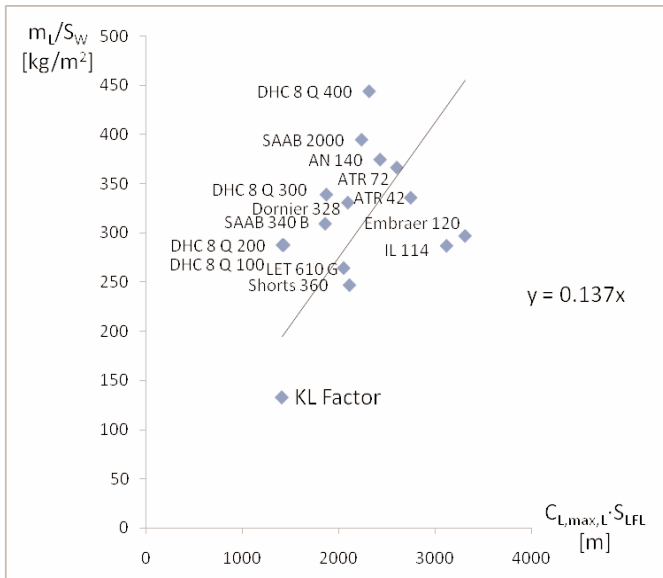


Fig. 5 — Statistical factor  $k_L$  for calculating wing loading from landing field length and maximum lift coefficient upon landing for turboprop aircraft

range achieve a shorter landing field length with the same wing loading.

$$\sigma = \frac{\rho}{\rho_0} = \frac{288.15K}{288.15K + \Delta T_L}$$

is the density ratio.  $\sigma$  differs from unity, if landing requirements have to be met at a high (or lower) temperature than following from International Standard Atmosphere (ISA) at Mean Sea Level (MSL).

$m_{ML} / m_{MTO}$  has to be selected. It may not be too low, otherwise fuel reserves or remaining fuel upon landing due to favorable flight conditions could result in a landing mass greater than maximum landing mass  $m_L > m_{ML}$  that is clearly not permissible. Typical values for large propeller driven aeroplanes are in the range between 0.95 and 1.00. On average a value of 0.97 may be selected. These aircraft are short range aircraft. For this reason the value is always very close to 1.0.

### 3.3 Take-Off Field Length

Take-off field length yields a fixed ratio between the optimization parameters power to mass and wing loading. In the matching chart this forms a straight line through the origin.

$$\frac{P_{TO} / m_{MTO}}{m_{MTO} / S_W} \geq \frac{k_{TO} \cdot V \cdot g}{S_{TOFL} \cdot \sigma \cdot C_{L,max,TO} \cdot \eta_{P,TO}}$$

The proportionality factor was evaluated (see Figure 6) from data selected for this category of large passenger turboprop aircraft:

$$k_{TO} = 2.25 \frac{m^3}{kg}$$

In comparison, large passenger jets [7], [9]:

$$k_{TO} = 2.34 \frac{m^3}{kg}$$

have practically the same value.

The speed  $V$  is the average speed during take-off. Averaging is done with respect to dynamic pressure which yields

$$V = V_2 / \sqrt{2}$$

$V_2$  is the take-off safety speed that has to be reached at the end of the take-off distance. It is usually taken as

$$V_2 = 1.2 V_{S,TO}$$

New amendments of CS-25 [1] also indicate the possibility to set  $V_2$  as low as

$$V_2 = 1.13 V_{S,TO}$$

Take-off stall speed depends on flap setting and hence selected lift coefficient. Making a connection to high lift capabilities during landing, we get

$$V_{S,TO} = V_{S,L} \sqrt{\frac{C_{L,max}}{C_{TO,max}}}$$

Older aircraft were designed to

$$V_{APP} = 1.3 V_{S,L}$$

New amendments of CS-25 [1] also indicate the possibility to set  $V_{APP}$  as low as

$$V_{APP} = 1.23 V_{S,L}$$

So

$$V_{S,L} = \frac{V_{APP}}{1.3} \text{ or } V_{S,L} = \frac{V_{APP}}{1.23}$$

$$V_{APP} = k_{APP} \cdot \sqrt{S_{LFL}}$$

$$\sigma = \frac{\rho}{\rho_0} = \frac{288.15K}{288.15K + \Delta T_{TO}}$$

The propeller efficiency  $\eta_{P,TO}$  for take-off is obtained from Figure 7 for the average speed  $V$  (see above) and a disc loading

$$L = \frac{P_{TO}}{\sigma \rho_0 S_D}$$

calculated from take-off power, density and disc area. During the first run of the sizing program the take-off power is not known. Instead a propeller efficiency is merely estimated from Figure 7. In a second iteration applying the sizing method, the take-off power from Block 15 can be used for a better estimate of the propeller efficiency with the help of Figure 7. At this point we should also be more specific about what is meant here with engine power: The power indicated is always the shaft power  $P = P_S$  and  $P_{TO} = P_{S,TO}$ .

### 3.4 Climb Rate during 2<sup>nd</sup> Segment

2<sup>nd</sup> segment climb rate yields the optimization parameter power to mass

$$\frac{P_{TO}}{m_{MTO}} \geq \frac{n_E}{n_E - 1} \cdot \left( \frac{1}{E} + \sin \gamma \right) \cdot \left( \frac{V_2 \cdot g}{\eta_{P,CL}} \right)$$

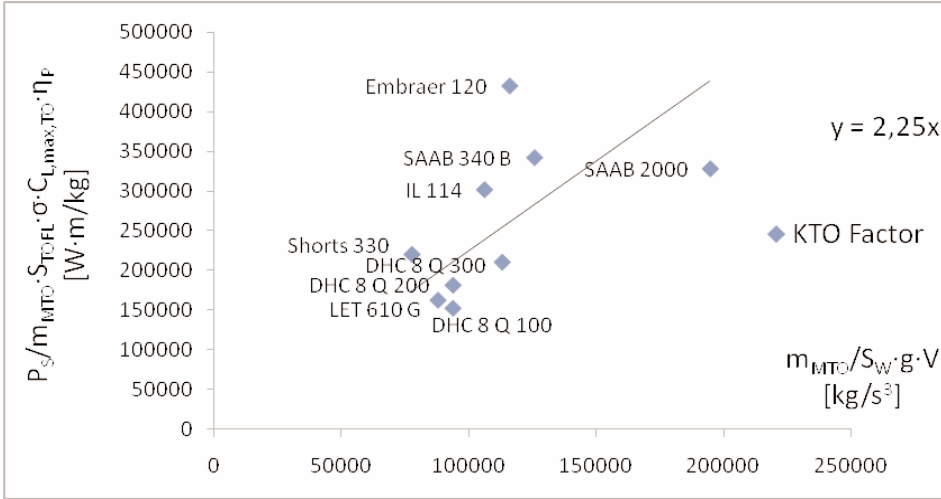


Fig. 6 — Statistical factor  $k_{TO}$  for calculating the take-off optimization parameter from take-off field length and maximum lift coefficient upon take-off for turboprop aircraft

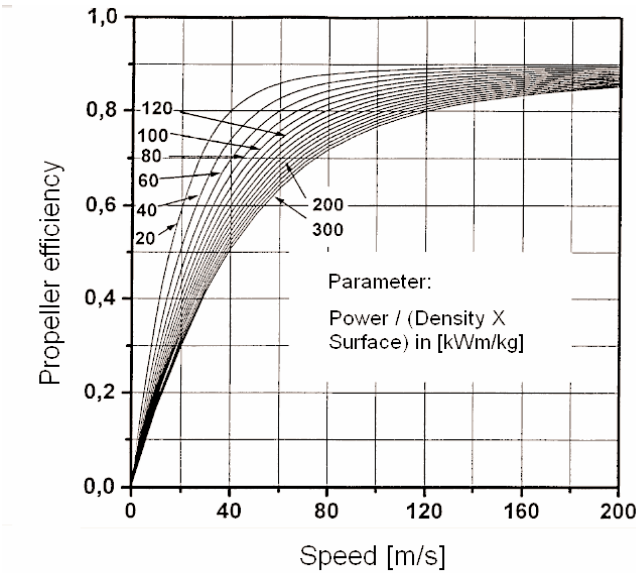


Fig. 7 — Propeller efficiency for variable pitch propellers as a function of aircraft speed and disc loading (the reference surface area is the propeller disc area). Adapted from [10]

$n_E$  stands for the number of engines.  $E = L/D$  is the glide ratio during take-off estimated from aspect ratio  $A$ , Oswald factor  $e$ :

$$E = \frac{C_L}{C_D} = \frac{C_L}{C_{D,P} + \frac{C_L^2}{\pi \cdot A \cdot e}}, \quad C_{D,P} = 0.05C_L - 0.035 \text{ (for } C_L \geq 1.1),$$

$$e = 0.7, \quad C_L = \frac{C_{L,max,TO}}{1.2^2}$$

The climb rate ( $\sin \gamma$ ) is given in [1]: "The steady gradient of climb may not be less than 2.4% for two-engined aeroplanes, 2.7% for three-engined aeroplanes and 3.0% for four-engined aeroplanes."

$V_2$  and  $\eta_{BCL}$  from Section 3.3.  $\eta_{BCL}$  is calculated with a speed  $V_2$ . Note correct propeller efficiency calculation requires iteration.

### 3.5 Climb Rate during Missed Approach

Missed approach climb rate puts once again a boundary condition on the optimization parameter power to mass

$$\frac{P_{TO}}{m_{MTO}} \geq \frac{n_E}{n_E - 1} \cdot \left( \frac{1}{E} + \sin \gamma \right) \cdot \left( \frac{V_{APP} \cdot g}{\eta_{P,L}} \right) \cdot \left( \frac{m_{ML}}{m_{MTO}} \right)$$

This time the estimate for  $E = L/D$  is done with

$$E = \frac{C_L}{C_D} = \frac{C_L}{C_{D,P} + \frac{C_L^2}{\pi \cdot A \cdot e}}$$

$$C_{D,P} = 0.05C_L - 0.035 \text{ (for } C_L \geq 1.1),$$

$$e = 0.7, \quad C_L = \frac{C_{L,max,L}}{1.3^2}$$

$$\Delta C_{D,gear} = 0 \text{ for [1] and}$$

$$\Delta C_{D,gear} = 0.015 \dots 0.020 \text{ for [2].}$$

The climb rate ( $\sin \gamma$ ) is given in [1]: "The steady gradient of climb may not be less than 2.1% for two-engined aeroplanes, 2.4% for three-engined aeroplanes and 2.7% for

four-engined aeroplanes."

$V_{APP}$  is taken from Section 3.3.  $m_{ML}/m_{MTO}$  is taken from Section 3.2.  $\eta_{PL}$  from Section 3.3, calculated with a speed  $V_{APP}$ . Note correct propeller efficiency calculation requires iteration.

### 3.6 Cruise

Cruise matching is based on the assumption of steady state straight flight. From the requirement of a certain cruise speed  $V_{CR}$  or cruise Mach number  $M_{CR}$ , the power to mass ratio and the wing loading are determined. In order to achieve this, two equations can be used: *Lift = Weight* and *Drag = Thrust*. Thrust will be replaced by power in the last equation. Both equations include atmospheric and/or engine parameters that are a function of cruise altitude. Since cruise altitude is not known when starting the sizing method, the power to mass ratio and the wing loading are calculated for a range of possible cruise altitudes. Data from this table is later drawn into the matching chart and stays for the cruise requirement.

#### 3.6.1 Lift = Weight

$$\frac{m_{MTO}}{S_W} = \frac{C_L \cdot M_{CR}^2}{g} \cdot \frac{\gamma}{2} \cdot p(H)$$

$$\frac{m_{MTO}}{S_W} = \frac{C_L \cdot \rho_0 \cdot V_{CR}^2 \cdot \sigma(H)}{2 \cdot g}$$

It is  $C_L / C_{L,md} = 1/(V/V_{md})^2$ , so the lift coefficient in cruise follows from  $C_L = \frac{C_{L,md}}{(V/V_{md})^2}$ ,

$$\text{with } C_{L,md} = \frac{\pi A e}{2E_{max}}$$

$V/V_{md}$  is an input parameter to the sizing method to help match the cruise performance. Maxim glide ratio  $E_{max}$  from Section 3.6.3.  $\sigma(H)$  is the relative density from the ISA,  $\rho_0 = 1.225 \text{ kg/m}^3$  is the density of the air at MSL from ISA.  $\gamma = 1.4$  is the ratio of specific heats.

#### 3.6.2 Drag = Thrust

$$\frac{P_{TO}}{m_{MTO}} = \frac{M_{CR} \cdot a(H) \cdot g}{P_{CR} / P_{TO} \cdot E \cdot \eta_{P,CR}}$$

$$\text{or } \frac{P_{TO}}{m_{MTO}} = \frac{V_{CR} \cdot g}{P_{CR} / P_{TO} \cdot E \cdot \eta_{P,CR}}$$

$$E = \frac{2E_{max}}{\left( \frac{C_L}{C_{L,md}} \right) + \left( \frac{C_L}{C_{L,md}} \right)}$$

with  $C_L / C_{L,md} = 1/(V / V_{md})^2$ .

$V / V_{md}$  is an input parameter to the sizing method to help match the cruise performance.  $\eta_{PCR}$  from Section 3.3,  $E$  from Section 3.6.3,  $P_{CR} / P_{TO}$  from Section 3.6.4.  $a(H)$  is the speed of sound from the ISA.

**3.6.3 Maximum Glide Ratio Estimation**

Maximum glide ratio  $E_{max} = (L / D)_{max}$  is estimated from aspect ratio  $A$  and wetted area  $S_{wet}$ . The ratio  $S_{wet} / S_w$  for large turboprop aeroplanes is between 5 and 7 with an average at about 6.2.

$$E_{max} = k_E \cdot \sqrt{\frac{A}{S_{wet} / S_w}}$$

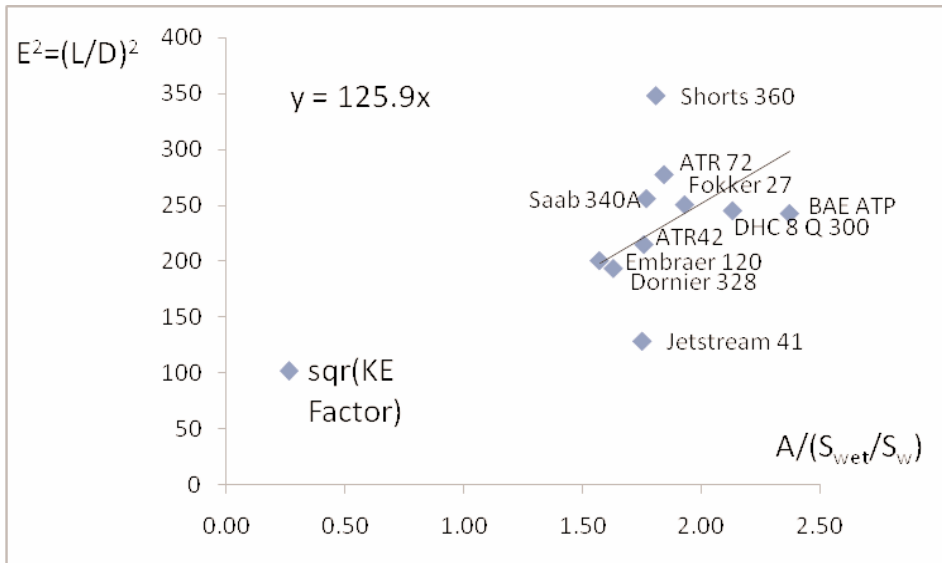
The proportionality factor was evaluated (see **Figure 8**) based on data from [11] for this category of large passenger turboprop aircraft:

$$k_E = 11.22.$$

In comparison [9],

- large passenger jets, long range:  $k_E = 17.25$ ,
- large passenger jets, medium range:  $k_E = 16.19$ ,
- large passenger jets, short range:  $k_E = 15.15$ .

It can be determined that statistically, the maximum lift coefficient (at the same aspect ratio and wetted area ratio) is smaller for aircraft with smaller range. Since the turboprop aircraft offer usually a smaller range than jets their maximum glide ratio is smaller (does not need to be that high).



**Fig. 8 — Statistical factor  $k_E$  for calculating the maximum glide ratio  $E_{max}$  for turboprop aircraft based on data from [11]**

**3.6.4 Engine Power Estimation**

In Section 3.6.2 the ratio  $P_{CR} / P_{TO}$  is used. This is the relative amount of engine shaft power left at altitude and at a certain aircraft speed. Since the sizing method should be a generic one, a data sheet that applies only for one specific engine may not be so helpful. For this reason, different sources with specific and generic engine performance data were studied in [13]. Furthermore, published equations to calculate  $P_{CR} / P_{TO}$  were investigated and fitted to the available data. As a result of the investigation an equation was recommended for use:

$$P / P_0 = AM^m \sigma^n \text{ with parameters } A, m \text{ and } n \text{ from Table 1.}$$

Author	Ref.Nr.	Page	Engine	$A$	$m$	$n$
Schaufele	[14]	187	generic	1.036	0.101	0.851
Brüning	[15]	58	T 64-GE-7	1.121	0.168	0.755
Russel	[16]	16	Rolls-Royce	1.725	0.267	0.966
Loftin	[7]	375	generic	1.089	0.091	0.924
McCormick & Barnes	[17]	351	PW 120	1.883	0.740	0.929
Average				1.371	0.273	0.885

**Tab. 1: Parameters  $A$ ,  $m$  and  $n$  to calculate the relative amount of engine shaft power  $P_{CR} / P_{TO}$  as a function of altitude (expressed by  $\sigma$ ) and Mach number  $M$**

**4 Combining Results**

Values of optimization parameters are drawn in the matching chart. An example is given in Section 5. The design point is found as explained in Section 2. The rest of the sizing process is straight forward and does not differ much from that process for large jet aeroplanes (see [9]).

The required fuel mass is calculated using fuel fractions. Fuel reserves have to be included. Domestic and international flights are distinguished. For turboprop aeroplanes usually domestic reserves apply. The additional distance for the flight to an alternate, which is normally assumed to be 200 NM for larger jets, may also be selected as a shorter distance for turboprops that are not so big. Reserve loiter time is 45 minutes.

As in all other sizing processes, it is important to make a clear statement about the payload range requirements.

Payload and range must from a pair of values in the payload range diagram (not any payload combined with any range). The fuel reserves and the cruise speed must be clearly stated together with the payload range requirements.

The fuel fractions for cruise flight, flight to the alternate and for loiter has in this sizing process to be based on the range equations for propeller aircraft. The Breguet factor for propeller aircraft

$$B_s = \frac{E \cdot \eta_p}{SFC \cdot g}$$

is used to calculate the segment fuel

fraction for the cruise flight phase

$$\frac{m_{LOI}}{m_{CR}} = e^{-\frac{s_{CR}}{B_s}}$$

$s_{CR}$  is the distance flown in cruise. If the distance to the alternate and the distance covered during loiter is added, no other equation is needed. Other segment fuel fractions (e.g. for take-off and landing) may be taken from tables [8]. All segment fuel fractions combined yield relative fuel mass  $m_F / m_{MTO}$ . Maximum take-off mass is finally calculated from

$$m_{MTO} = \frac{m_{PL}}{1 - \frac{m_F}{m_{MTO}} - \frac{m_{OE}}{m_{MTO}}}$$



### 5 Example Calculation: ATR 72

The sizing method was put to a test with the redesign of an ATR 72. The requirements for the sizing task were taken from the manufacturers web page.

- Landing:  $S_{LFL} = 1067 \text{ m}$
- Take off:  $S_{TOFL} = 1290 \text{ m}$
- 2<sup>nd</sup> Segment:  $n_E = 2 \quad \gamma = 0.024$
- Missed Approach:  $n_E = 2 \quad \gamma = 0.021$
- Cruise:  $M = 0.41$
- Range:  $R = 715 \text{ NM}$
- Payload:  $m_{PL} = 6460 \text{ kg}$

Cruise altitude, determined from the design point:  $H_{CR} = 3888 \text{ m}$ .

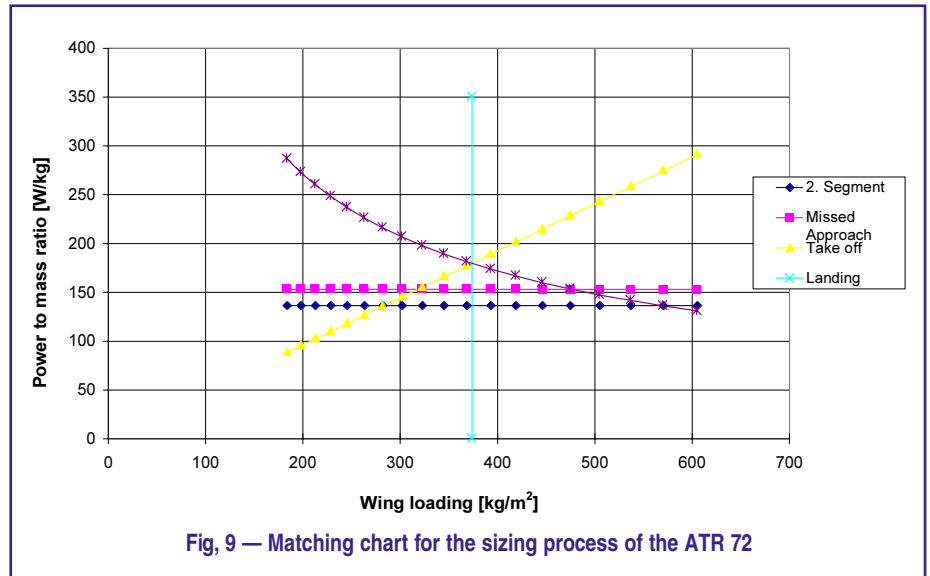


Fig. 9 — Matching chart for the sizing process of the ATR 72

### 6 Conclusion

A preliminary sizing method for turboprop aeroplanes was presented. The method includes — where necessary — equations based on aircraft statistics. The preliminary sizing method was tested with a redesign task of an ATR 72. The redesign with the proposed method was possible with only minor difference between the respective ATR value from the redesign case and the original ATR 72 value.

Flight Phase	$C_{L,max}$	$C_L$	$E_{max}$	$E$	$\eta_P$
Landing	2.5				
Take-off	2.1				0.64
2 <sup>nd</sup> Segment		1.46		12.28	0.73
Missed Approach		1.48		10.79	0.73
Cruise		0.503	15.74	12.49	0.86

Tab. 2: Results from the redesign sizing process of an ATR 72 — Aerodynamic parameters and propeller efficiency



Parameter	Original ATR 72	Redesigned ATR 72	Difference
$m_{MTO}$ [kg]	22800	22925	0.5%
$m_L$ [kg]	22350	22466	0.5%
$m_{OE}$ [kg]	12950	13021	0.5%
$S_W$ [m <sup>2</sup> ]	61	61.35	0.6%
$b$ [m]	27.05	27.13	0.3%
$P_{TO}$ (one engine) [kW]	2051	2061	0.5%
$m_{MTO}/S_W$ [kg/m <sup>2</sup> ]	373.8	373.7	0.0%
$P_{TO}/m_{MTO}$ [W/kg]	179.9	179.8	-0.1%

Tab. 3: Results from the redesign sizing process of an ATR 72: Mass, wing area, power

### References:

- [1] European Aviation Safety Agency: *Certification Specifications for Large Aeroplanes*, CS25, Amendment 4, 27 December 2007, <http://www.easa.eu.int>
- [2] U.S. Department for Transportation, Federal Aviation Administration: *Federal Aviation Regulations, Part 25, Transport Category Airplanes*, 2007, <http://www.faa.gov>
- [3] European Aviation Safety Agency: *Certification Specifications for Normal, Utility, Aerobatic, and Commuter Category Aeroplanes*, CS23, Decision 2003/14/RM, 14 November 2003, <http://www.easa.eu.int>
- [4] U.S. Department for Transportation, Federal Aviation Administration: *Federal Aviation Regulations, Part 23, Normal, Utility, Aerobatic and Commuter Category Airplanes*, 2007, <http://www.faa.gov>
- [5] European Aviation Safety Agency: *Certification Specifications for Very Light Aeroplanes*, CS-VLA, Decision No. 2003/18/RM, 14 November 2003, <http://www.easa.eu.int>
- [6] Corning, G.: *Supersonic and Subsonic Airplane Design*; Published by Corning, G., 1964
- [7] Loftin, L.K.: *Subsonic Aircraft: Evolution and the Matching of Size to Performance*; NASA Reference Publication 1060, 1980
- [8] Roskam, J.: *Airplane Design. Vol. 1: Preliminary Sizing of Airplanes*; Ottawa, Kansas, 1989, <http://www.darcorp.com> — Sale: Analysis and Research Corporation, 120 East Ninth Street, Suite 2, Lawrence, Kansas, 66044, USA.
- [9] Scholz, D.: *Short Course, Aircraft Design*; Hamburg University of Applied Sciences, May 2008, <http://www.flugzeugentwurf.de>